

UP-N-OUT

By Scandia Marine Products

Dock Ladder Installation

We suggest you read-through all instructions before starting installation



Installation Summary

- Locate & Mount Plate
- Mount Ladder into Plate
- Test & Store

Safety Concerns

- Working over the Water Can be hazardous:
- Wear a life jacket and safety glasses
- Use cordless tools or make sure your tools are plugged into a GFCI Outlet

Needed Tools & Fasteners

- Marking Pencil
- Carpenter Level or Good Eye
- Drill and Appropriate Bits Including Phillips Head
- Sockets or wrenches Appropriate for Selected Fasteners
- Flat Screw Driver or Needle Nose Pliers to Spread Cotter Pins



1. Determine Ladder Location

Find the best place to mount the Up-N-Out taking into consideration the following points:

- Visibility from water for swimmer
- Electric or plumbing services running underneath dock
- Not to interfere with docking vessels
- Mounting plate requires a flat surface clear of obstructions including rub edges

2. Select Correct Fasteners

Use the 2 - 3/8" lag bolts included for wood or plastic solid lumber. For mounting on other materials use appropriate fasteners of equal strength and security.

3. Position Plate and Mark and Drill Holes:

- Set Plate temporarily into position on dock (over edge board if present).
- Make sure plate is pushed tight up against dock
- Mark the 2 holes to be used on top of plate.

If two rear tab holes have obstructions or no good material under them, use one pair of the 2 alternative holes located above tabs.

- Remove plate and drill holes.



4. Position and Secure Dock Plate

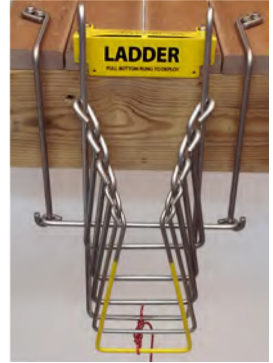
- Bolt into place with two bolts through top.
- If alternative holes were used, bolt through the same holes used to mark hole in #4.
- Secure front of plate with 2 wood screws included.



5. Secure Top Backup Step

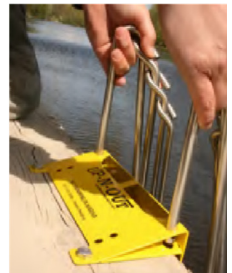
(PIER MOUNT LADDERS ONLY - SL2852A or SL2864A only)

- Assemble backup step as in photo with hooks outward on support legs. The double eyed step bar can be assembled to the support legs with the eyes back or the eyes front. Choose the best way that positions the step between 1 ½" and 2 ½" out from the front of the plate. Use a carpenter level or your good eye to determine. Secure the top backup step assembly with 4 bolts 3/8" or larger as in photo.



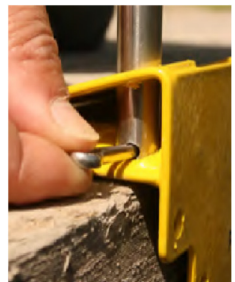
6. Install Ladder to Plate

- Insert ladder assembly into two double holes on top of plate near the front of the plate.
- Ladder steps may need to be extended to allow top step to spread enough to fit into mounting holes
- Be sure to push ladder all the way down through bottom holes to dock surface.
- (PIER MOUNT LADDERS ONLY - SL2852A or SL2864A)** The main ladder rung that is inserted into the mounting plate holes should rest lightly against the top backup step installed in #5 to allow the sliding third step to pass with a reasonable effort from the swimmer.



7. Insert Cotter Pins

- Insert cotter pins (included) through side of mounting plate into the small holes on the ladder assembly.
- Cotter pins will pass on top of angled brace on outside and under angled brace on the inside as shown.
- Spread cotter pin ends to secure



8. Test Installation

- Extend ladder into water to check for obstructions
- Make sure the forked lower rest (picture of fork) contacts the side of dock to prevent the top fixed rung from bending under the dock when the ladder is in use.
- The lower rest forks may need to be spread to provide a more vertical mounting of the top step. This is usually needed in absence of an edge board. The photos show maximum angle from vertical allowed. To decrease this angle, lay the ladder assembly, forks down, on the dock and step down hard above them to spread forks.



9. Secure Ladder into Ready Position

- Pull ladder rungs back up into stored position
- Use retaining clip (located on the bottom of the top rung) to hold ladder in position with spring loading. Two small loops on clip should be pulled over top of bottom yellow rung creating spring tension to hold ladder assembly up into stored position.

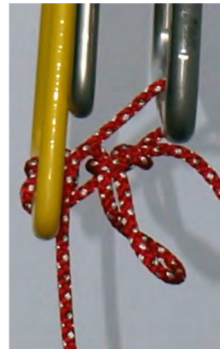


Retaining Clip Adjustments - Spring tension of the retaining clip fingers can be reformed as necessary to hold ladder firmly in retracted position.

PIER MOUNT LADDERS ONLY

Tie Tripline Knot - Secure pier mount ladder with tripline. Tie the tripline to

the bottom yellow step with a bowline knot and a 6" tail. Loop the tail over the second fixed step and tie to the tripline with a bow. The tripline end should form the loop of the bow only. The tripline should hang down to within 12" of water at low tide. Test for proper deployment from the position of a swimmer in the water.



Maintenance & Operation

On an annual basis or when the ladder has been hit, check to ensure that it extends properly and that the mounting is solid and secure. Check visually for any alterations and correct as necessary to restore the ladder to full function.